



TIIG  
INJURY SURVEILLANCE IN THE NORTH WEST OF ENGLAND

LEIGHTON HOSPITAL EMERGENCY DEPARTMENT

MONTHLY BULLETIN: OCTOBER 2013 TO SEPTEMBER 2014

This bulletin provides a breakdown of all injury attendances to Leighton Hospital Emergency Department (ED) between October 2013 and September 2014.

During this twelve month period there were 36,403 injury attendances. The month with the highest number of attendances, calculated as a daily average, was June 2014 (118 per day) compared to January 2014, the month with the fewest (82 per day; **Figure 1**).

There were more males (54%) than females presenting at Leighton Hospital ED (**Figure 1**). **Figure 2** presents the age group of injury attendances. Across the whole year over three in ten (32%) injury attendances were made by individuals aged between 30 and 59 years.

**Table 1** details the patient group for injury attendances to Leighton Hospital ED. The majority (90%) of injury attendances were classified as other injury. Road traffic collisions (RTCs) accounted for 5% of attendances while assaults accounted for 2%.

**Table 2** illustrates the source of referral for patients presenting with injuries. The majority (75%) of injury attendees self-referred while 11% were referred by the emergency services.

**Table 3** presents injury attendances by incident location. Over one-third (34%) of attendances occurred in the home and under three in ten (28%) occurred in a public place.

**Table 4** shows the discharge destination of injury attendances. More than two-thirds (68%) of attendees were discharged and 27% were referred for further treatment.

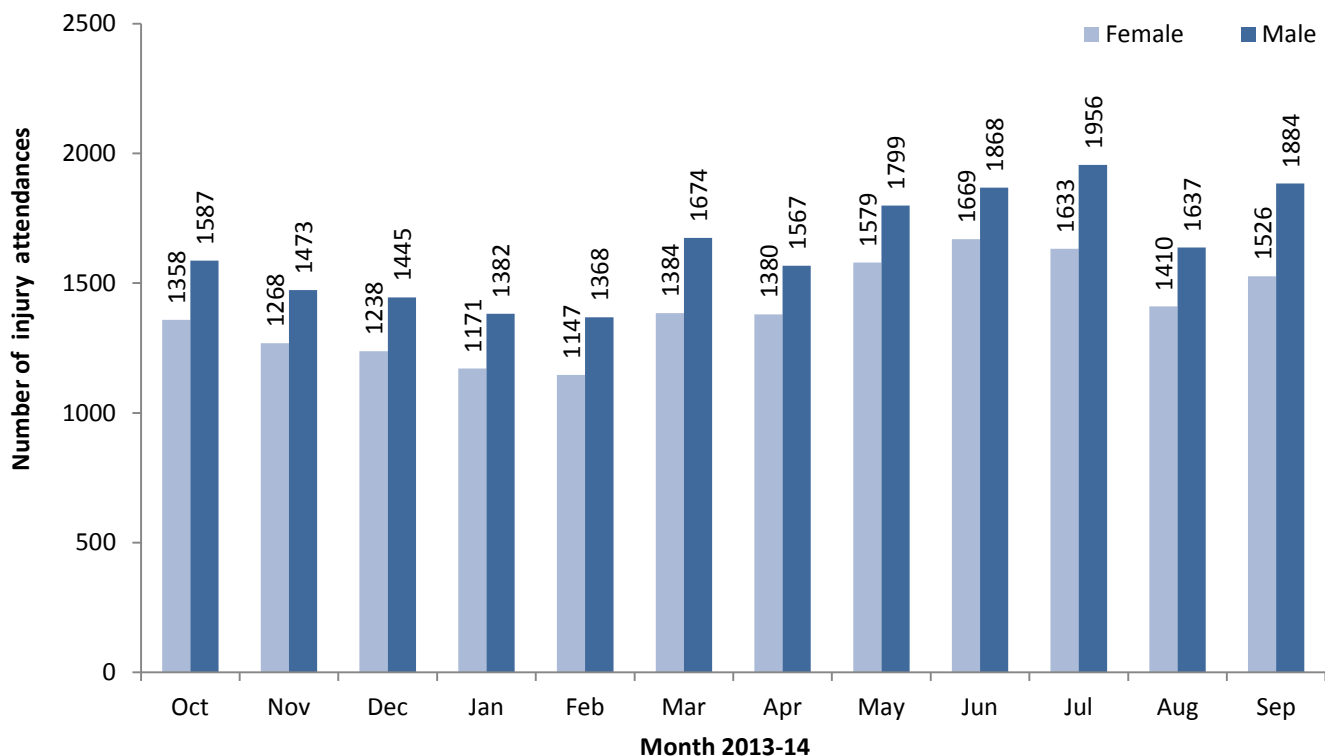
#### **Assault attendances**

Between October 2013 and September 2014 there were 873 assault-related injury attendances to Leighton Hospital ED.

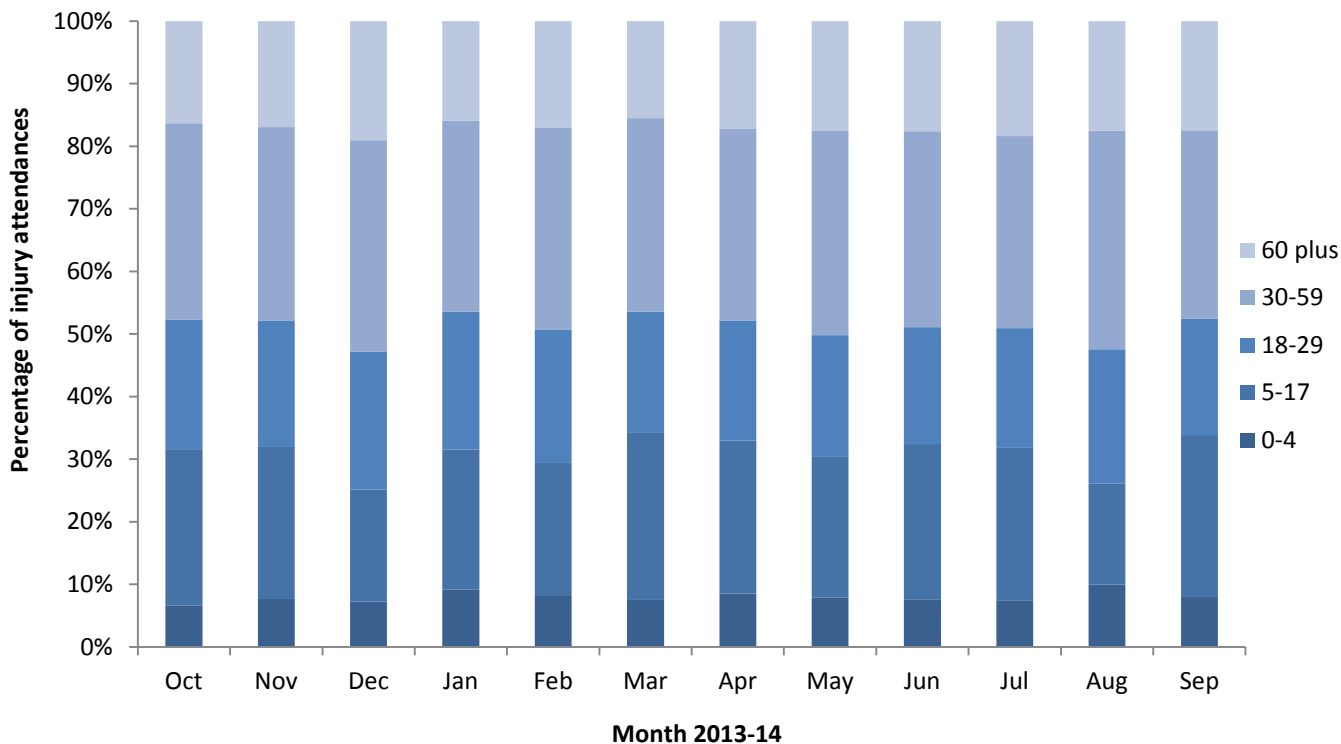
Assault attendees presenting at Leighton Hospital ED were mainly male (71%) and almost half (46%) were aged between 18 and 29 years.

**Table 5** shows the primary assault location was a public place (43%) and over one-quarter (26%) occurred in the home.

**Figure 1: ED injury attendances by gender and month, October 2013 to September 2014**



**Figure 2: ED injury attendances by age group and month, October 2013 to September 2014<sup>^</sup>**



<sup>^</sup> There were 6 records where the age was unknown; these have been omitted from the chart

**Table 1: ED injury attendances by injury group and month, October 2013 to September 2014**

Injury group	Oct	Nov	Dec	Jan	Feb	Mar	Apr	May	Jun	Jul	Aug	Sep	Total	%
Other Injury	2585	2417	2366	2252	2273	2754	2704	3052	3199	3227	2732	3093	32654	90%
RTC	203	163	167	165	135	132	116	138	142	160	135	126	1782	5%
Assault	83	76	95	64	53	76	58	85	71	83	63	66	873	2%
Sports injury	43	61	34	56	35	57	40	58	58	25	41	78	586	2%
Bites/stings	31	24	21	16	19	39	29	45	67	94	76	47	508	1%
<b>Total</b>	<b>2945</b>	<b>2741</b>	<b>2683</b>	<b>2553</b>	<b>2515</b>	<b>3058</b>	<b>2947</b>	<b>3378</b>	<b>3537</b>	<b>3589</b>	<b>3047</b>	<b>3410</b>	<b>36403</b>	<b>100%</b>

**Table 2: ED injury attendances by source of referral and month, October 2013 to September 2014<sup>§1</sup>**

Source of referral	Oct	Nov	Dec	Jan	Feb	Mar	Apr	May	Jun	Jul	Aug	Sep	Total	%
Self-referral	2133	2016	1933	1898	1871	2290	2236	2633	2661	2652	2435	2621	27379	75%
Emergency services	361	359	421	289	294	332	330	309	367	397	292	364	4115	11%
Other	243	205	163	211	189	262	257	271	318	352	172	257	2900	8%
Work	48	52	36	40	36	38	26	29	32	40	26	28	431	1%
Educational establishment	58	41	37	39	46	55	<20	26	45	31	0	35	430	1%
Referred from MIU	32	24	30	16	19	23	27	43	41	23	51	35	364	1%
General practitioner	24	21	24	22	22	19	25	20	30	38	29	29	303	1%
Unknown	11	5	6	9	9	15	8	19	19	28	21	17	167	0%
Police	18	8	19	16	16	12	11	11	10	17	10	11	159	0%
Health care provider	11	5	8	7	<10	<10	5	7	9	***	<10	7	90	0%
NHS Direct	<10	5	***	<10	***	***	5	<10	5	6	***	<10	58	0%
Local Authority social services	***	0	***	***	0	0	0	***	0	***	0	***	7	0%
<b>Total</b>	<b>2945</b>	<b>2741</b>	<b>2683</b>	<b>2553</b>	<b>2515</b>	<b>3058</b>	<b>2947</b>	<b>3378</b>	<b>3537</b>	<b>3589</b>	<b>3047</b>	<b>3410</b>	<b>36403</b>	<b>100%</b>

<sup>§</sup> MIU = Minor Injuries Unit

**Table 3: ED injury attendances by incident location and month, October 2013 to September 2014**

Incident location	Oct	Nov	Dec	Jan	Feb	Mar	Apr	May	Jun	Jul	Aug	Sep	Total	%
Home	917	871	991	884	874	1014	1062	1186	1171	1201	1123	1117	12411	34%
Public place	871	761	719	635	677	867	828	878	943	992	931	1006	10108	28%
Unknown	429	414	374	399	334	404	461	628	744	649	611	587	6034	17%
Work	265	257	232	228	249	256	260	280	248	292	226	269	3062	8%
Educational establishment	265	250	162	225	177	294	128	181	233	230	9	270	2424	7%
Other	198	188	205	182	204	223	208	225	198	225	147	161	2364	6%
<b>Total</b>	<b>2945</b>	<b>2741</b>	<b>2683</b>	<b>2553</b>	<b>2515</b>	<b>3058</b>	<b>2947</b>	<b>3378</b>	<b>3537</b>	<b>3589</b>	<b>3047</b>	<b>3410</b>	<b>36403</b>	<b>100%</b>

**Table 4: ED injury attendances by discharge destination and month, October 2013 to September 2014**

Discharge destination	Oct	Nov	Dec	Jan	Feb	Mar	Apr	May	Jun	Jul	Aug	Sep	Total	%
Discharged	1981	1886	1774	1776	1731	2106	1968	2309	2453	2554	2093	2299	24930	68%
Referred	831	757	810	713	689	829	830	888	875	839	794	900	9755	27%
Other	63	49	51	40	57	74	73	93	126	91	79	124	920	3%
Admitted	70	49	48	24	38	49	76	88	83	105	81	87	798	2%
<b>Total</b>	<b>2945</b>	<b>2741</b>	<b>2683</b>	<b>2553</b>	<b>2515</b>	<b>3058</b>	<b>2947</b>	<b>3378</b>	<b>3537</b>	<b>3589</b>	<b>3047</b>	<b>3410</b>	<b>36403</b>	<b>100%</b>

<sup>1</sup> Please note that all numbers less than five have been suppressed (with \*\*\*) in line with patient confidentiality. If there is only one number less than five in a category then two numbers have been suppressed to prevent back calculations from totals.

## ASSAULTS

Table 5: ED assault attendances by incident location and month, October 2013 to September 2014<sup>2</sup>

Incident location	Oct	Nov	Dec	Jan	Feb	Mar	Apr	May	Jun	Jul	Aug	Sep	Total	%
Public place	37	33	45	24	27	34	24	35	33	34	25	21	372	43%
Home	19	20	20	15	6	22	14	27	11	27	19	26	226	26%
Unknown	13	11	16	15	11	8	11	10	15	12	10	7	139	16%
Other	<10	***	8	***	***	***	5	***	6	***	***	5	51	6%
Work	***	6	***	***	6	***	***	9	***	***	<10	<10	50	6%
Educational establishment	5	***	<10	***	***	7	***	***	***	***	0	***	35	4%
<b>Total</b>	<b>83</b>	<b>76</b>	<b>95</b>	<b>64</b>	<b>53</b>	<b>76</b>	<b>58</b>	<b>85</b>	<b>71</b>	<b>83</b>	<b>63</b>	<b>66</b>	<b>873</b>	<b>100%</b>

Published January 2015

Trauma and Injury Intelligence Group

Centre for Public Health, Faculty of Education, Health and Community, Liverpool John Moores University,  
2nd Floor, Henry Cotton Building, Liverpool L3 2ET

T: 0151 231 4498 | E: [tiig@ljmu.ac.uk](mailto:tiig@ljmu.ac.uk) | W: [www.tiig.info](http://www.tiig.info) and [www.cph.org.uk](http://www.cph.org.uk) | Twitter: [www.twitter.com/tiig\\_cph](https://www.twitter.com/tiig_cph)

<sup>2</sup> Please note that all numbers less than five have been suppressed (with \*\*\*) in line with patient confidentiality. If there is only one number less than five in a category then two numbers have been suppressed to prevent back calculations from totals.